

INSTALLATION INSTRUCTIONS FOR THE L 621 SERIAL-TO-USB ADAPTER BRIDGE

These instructions are meant to facilitate connection between Rotalign®, Rotalign® Pro, Aligned®, smartAlign®, Optalign® Plus, Permaplumb®, Permalign®, Vibscanner®, or Vibrotip® instruments and a PC that does not have a serial port but does have a USB port, in order to communicate with Printing Tool, Alignment Commander, Alignment Explorer, Alignment Center, Alignment Reporter, Alignment Reader, WinPlumb™, WinPerma™, or Omnitrend® software.



**Ludeca Part No. L 621
Serial-To-USB Adapter Bridge**

- 1) Install Serial to USB Adapter driver software on your PC¹ from the CD-Rom supplied with the adapter cable, or, you can download it for free from the manufacturer's website at:
<http://www.iogear.com/support/dm/driver/GUC232A#display>
- 2) Connect your instrument's PC cable to the serial port on your instrument. Plug the L 621 Serial-to-USB Adapter cable into the other end of the cable. Now plug the USB end of the L 621 Adapter cable into the USB port of your PC.
- 3) On your PC, go to **Control Panel/System/Hardware/Device Manager/Ports** and find your USB to Serial Bridge [see Figure 1 on page 2.] You need to set the Com port for it to any available port from **1 to 4**. [Note the example in Figure 1 is set to Com port #2.]
- 4) Turn on your instrument and start the PC communications function (if needed.) ☐

¹ You need full Admin rights to your PC to do this! See Appendix A on page 3 for detailed installation instructions.

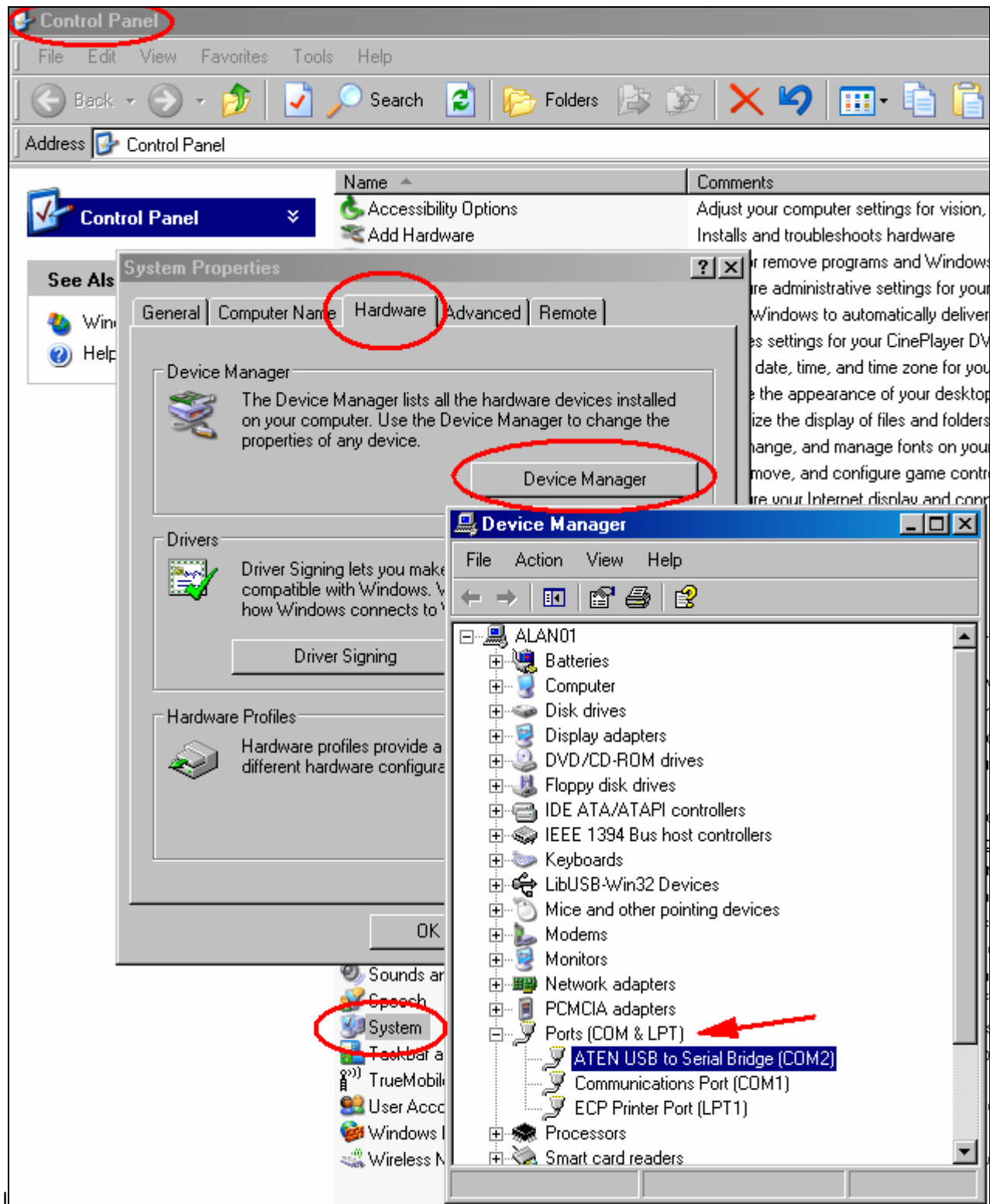


Figure 1

If not already set to one of these ports, change it by right-clicking on the highlighted bridge name, click Properties, then click the Port Settings tab, then click Advanced and change the Com Port Number in the drop down window.²

² You need full Admin rights to your PC to do this!

APPENDIX A

SOFTWARE INSTALLATION INSTRUCTIONS

L 621 or IOGEAR #GUC232A USB-TO-SERIAL ADAPTER

Requirements:

Microsoft Windows 2000, Millennium, 98SE, or XP, and a USB port.

Instructions:

- 1) Insert the IOGEAR Installation CD-ROM into your computer.
- 2) You will see the README for the IOGEAR installation CD-ROM.
- 3) After you click Continue, you will be presented with the End User Agreement of the IOGEAR USB to Serial Adapter. Once you have finished reading, you may select "I accept the terms in this License Agreement" if you wish to continue the installation procedure.
- 4) You will now begin the installation procedure. Click "Start".
- 5) The installation procedure will begin.
- 6) Once you have finished installing the drivers for your IOGEAR USB to Serial Adapter, plug in your L 621 or IOGEAR USB-to-Serial Adapter to complete installation.
- 7) Once you plug-in the adapter, Windows will say that it has found a USB/Serial Controller.
- 8) Then Windows will tell you that New Hardware has been found. Click Next.
- 9) Windows will now ask you if you wish to search for the device driver.
- 10) Select "Search for suitable device driver for my device (recommended)" then click Continue.
- 11) Windows will now ask you to insert the Manufacturer's driver disk into the CD-ROM.
- 12) Type in: C:\IOGEAR GUC232A, then click OK
- 13) Windows will now tell you that a device driver has been found. Click Next
- 14) Windows will now tell you that the device driver installation has been completed. Click Finish.

Optional:

Once you have completed the installation, you're probably going to want to know what COM port your IOGEAR USB to Serial Adapter is installed as.

- 15) Open Device Manager by right-clicking on the My Computer icon on your desktop, then click Properties.
- 16) Select the Device Manager tab.
- 17) Click the Device Manager button. You will see the Device Manager of your computer. The (COM#) represents which Communications Port Number your IOGEAR USB to Serial Adapter is assigned to. ATTENTION! - Windows 2000 & XP Users: You may change this by double-clicking the IOGEAR USB-to-Serial Bridge in the Device Manager; Select Port Settings, and click the Advanced button. The COM Port # will change to whatever address (port number) you select, then click OK. However, if you unplug and then plug the IOGEAR USB to Serial Adapter into any other USB port on your computer, this COM Port # *may* change. Leave the adapter in the USB port you originally installed it in, so that the COM Port # will stay the same. ☐