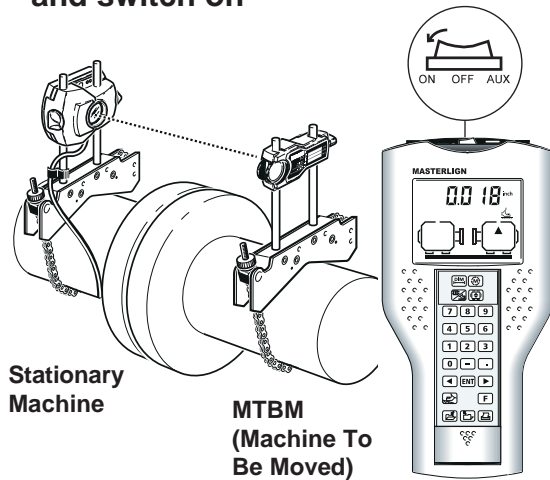


1. Mount MASTERLIGN® and switch on



Stationary Machine

MTBM
(Machine To Be Moved)

Resume: You can resume where you last left off by pressing .

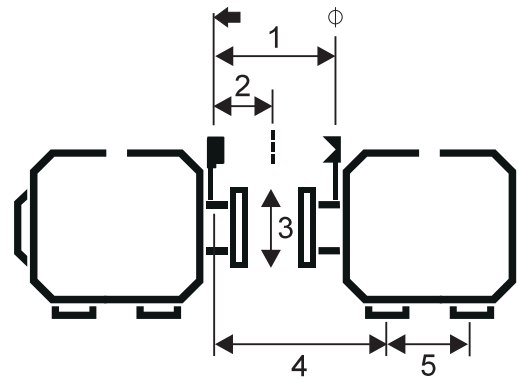
Tolerances for Shaft Alignment

RPM	Offset (mils)		Gap (mils/10")		Spacer Shaft (mils/inch)	
	Excellent	Acceptable	Excellent	Acceptable	Excellent	Acceptable
600	5.0	9.0	10.0	15.0	1.8	3.0
900	3.0	6.0	7.0	10.0	1.2	2.0
1200	2.5	4.0	5.0	8.0	0.9	1.5
1800	2.0	3.0	3.0	5.0	0.6	1.0
3600	1.0	1.5	2.0	3.0	0.3	0.5
7200	0.5	1.0	1.0	2.0	0.2	0.3

All Speeds: Maximum Soft Foot Reading 2 mils.
Use OEM or in-house tolerances if available.



2. Enter dimensions



- 1. Laser to prism
 (Arrow point to hash mark "φ" on prism)
 (Center-to-center of support posts)
- 2. Laser to center of coupling
 (Center of flex planes)
- 3. Working diameter **10"**
 (Coupling diameter) (Default value)
- 4. Laser to front foot
- 5. Front foot to back foot



3. Measure

- Adjust prism so that laser beam strikes center of the prism cap cross hair.
- Remove cap.
- Adjust prism until coordinates are close to 00.
- *TURN* will appear on the screen.
- Rotate shafts at least 75°.



4. Results

Coupling Results

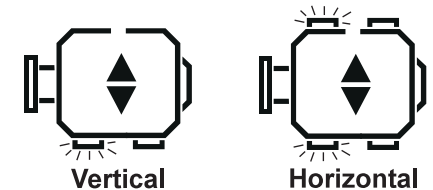
- Press until appears. Press or or to toggle through offset and angular misalignment.

- (+) Positive coupling offset
- (-) Negative coupling offset
- (+) Positive coupling gap
- (-) Negative coupling gap

Repeat sections 3 and 4 to establish repeatability.

Foot Corrections

- Press until appears. Press or or to toggle through vertical shimming and horizontal move corrections.



Vertical

Horizontal

Arrows show direction of move or shimming. Apply correction to blinking foot.



5. Move

- Rotate shafts until 45° appears (±4°)
- Adjust beam close to 00 if necessary.
- When *ENTER* appears press .
- Loosen bolts.
- Move machine horizontally into alignment.
- Retighten bolts.
- Repeat Sections 3 and 4.

Order No. 01-199-01

©1999 LUDECA, INC. Masterlign and InfiniRange are registered trademarks of Prueftechnik AG.



Soft Foot

- Position shafts at either 90° or 270° ($\pm 4^\circ$).
- Adjust beam close to if necessary. Press . (Not necessary if "----" appears.)
- Press then loosen the bolt, press to record value then tighten bolt.
- Press or to move to the next foot.

Follow this procedure for all remaining feet and correct soft foot if greater than 0.002".

F**6**

InfiniRange®

(Measurement Range Extension)

- If *End* or *off* appear during rotation, turn shafts back until numbers reappear. (*InfiniRange* then starts automatically.)
- Adjust beam close to and press .
- Proceed with measurement.

Note: You may initiate *InfiniRange* manually at any time by pressing .

F**7****4**

'Results' Default

- Factory default is Coupling Results.
- Press to toggle between and .
- Press to confirm selection.

Storing and Printing Data



Saves file



Opens file

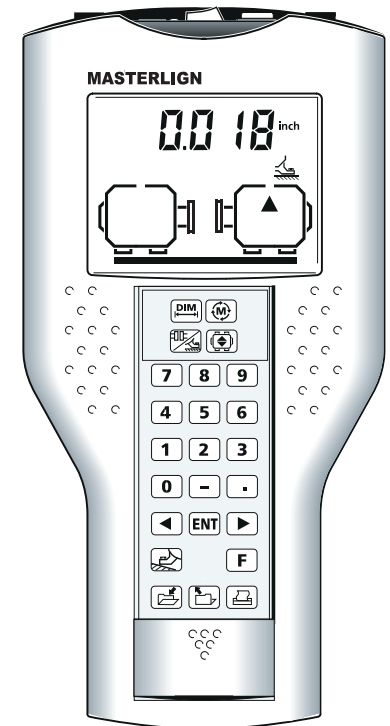


Prints a report

MASTERLIGN®

Quick Reference

Version 1.1x



Visit us at: www.LaserAlignment.Net

Voelzow & Company, Inc.

P.O. Box 158 • Wingate, NC 28174
 704-233-9222 • Fax 704-233-9211
 E-mail: nvoelzow@perigee.net
 Web: www.LaserAlignment.net

LUDECA, Inc.

1425 N.W. 88th Avenue, Miami, FL 33172
 Phone: (305) 591-8935 • Fax (305) 591-1537
info@ludeca.com • www.ludeca.com